

NSTLPRD Lake Management Update

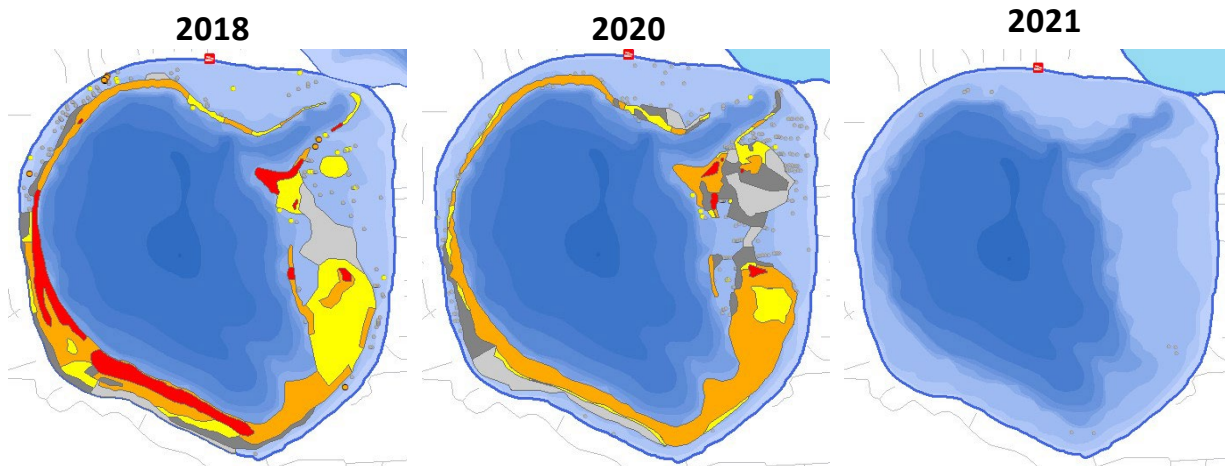
Through the fall of 2021 and the winter of 2022 your Lake District Board of Commissioners has been active and focused on protecting and rehabilitating North and South Twin Lakes. We continue to focus on two primary initiatives;

- The goal being we achieve “control” over EWM on both N and S Twin. We define “control” as requiring only DASH, hand pulling or small scale herbicide treatments to keep the EWM from rebounding in the short term.
- Explore alternatives, as discussed at our fall annual meeting, to reduce the incidence of Swimmers Itch (SI) on the Twins.

EWM Update

Last summer, we treated approximately 58 acres of S Twin with the herbicide ProcellaCOR. The initial result of that treatment was extremely encouraging with the EWM essentially falling over approximately two weeks after treatment in the areas where they were directly treated. These results mirror what we observed on N Twin in treatments performed in spring 2019 and 2020.

South Twin Lake (Vilas Co.) Late-Summer EWM Mapping Surveys



Onterra LLC
Lake Management Planning

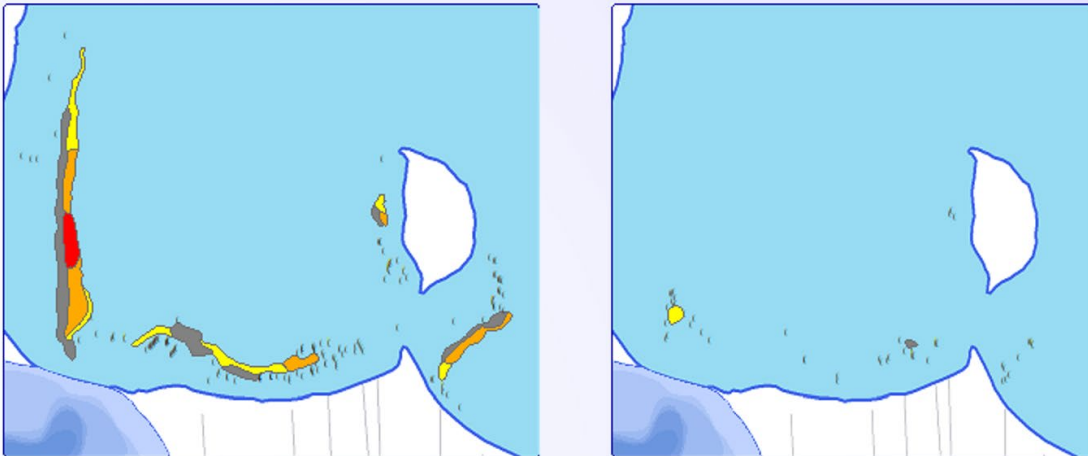
The late fall survey of the lakes by Onterra, as well as DASH diving, identified several acres of milfoil in the northwest corner or untreated area of South Twin where there was some referred benefit (it fell over approximately 4 weeks after treatment) on that EWM colony. We are unsure if the damage was sufficient to "knock-out" the EWM or if it was just injured. Thus, an early spring survey will be completed to determine if a small scale summer herbicide treatment is warranted or if the area can be managed via DASH. We have submitted permits for both activities and have been in discussion with the WDNR over possible summer management activities. We expect the survey results in early

June depending on weather and plant growth. The District did receive a 50% grant for 2022 to assist with our continuing costs to control EWM.

This past summer we spent approximately 2 weeks performing DASH over all of N Twin where small or emerging colonies have been identified. The results of our 2019 and 2020 herbicide treatments in conjunction with 3 years of aggressive DASH activities, have in our opinion achieved “control” of EWM on N Twin.

Please see our website as we have recently posted our 2021 Annual Twin Lakes Monitoring Report as well as a recent presentation made at the annual Midwest Aquatic Plants Management Society meeting in Lake Geneva where the Twins were a presenter on how Integrated Pest Management Strategies can be effective in the battle against EWM.

North Twin Lake 2018 vs 2021 Survey



Onterra LLC
Lake Management Planning

Swimmers Itch

At our fall annual meeting, it was the unanimous opinion that riparians expressed strong concern over SI and approved a budget to investigate and implement possible solutions. We initiated a conversation with the WDNR in the fall to discuss swimmers itch mitigation plans. Based on our discussions we determined that the best approach was to apply for a Scientific Research License (SRL).

Working with Ph.D.'s Curt Blankespoor and Randy DeJong an application for an SRL has been submitted. We have had multiple direct and indirect interactions with the WDNR to obtain such license.

The SRL project will require two full-time summer interns to conduct research on snails, ducks and the waters of the lakes over a 3 year period. Our costs can be reduced if we can find donated summer housing for the interns who will be college students. If a NSTLRA or Lake District member would like more information on providing housing, please contact a Lake District Commissioner.

We will once again want to track incidences of SI to understand historical, current and future trends of SI.

We will update you of our permitting progress as we learn more.

Stakeholder Survey - Lake Management Plan

Folks around the Twin Lakes recently should have received an email and/or a post card inviting you to provide input that will help as we update our Lake Management Plan. To qualify for financial grants the WDNR requires the Lake Management Plan (LMP) to be updated every five years. The update process takes almost a year to complete, so we are starting early. Our first action is collecting input from our stakeholders.

If you have not responded to the survey - online or on paper - we encourage you to submit your reply. If you "lost" your post card with the website address and/or lost your ID code for the online version, please send a note to Commissioners Joe Fritzsche or Jay Wittman. The survey will be "open" until approximately May 31, 2022.

Be sure to check the Lake District website - nsslakedistrict.com - for news and information.

Looking forward to enjoying our wonderful lakes for a great 2022 summer.

Commissioners
North & South Twin Lakes Protection and Rehabilitation District

NSTLPRD Lake Management Update Spring 2023

The NSTLPRD Board has had a very busy fall and winter as we prepare for an active summer on the Twins.

Our fall survey of the lakes identified several emerging areas of EWM on the Twins. The native plant growth was identified as very strong with no impact on native plant other than Northern Milfoil (cousin of EWM) showing any signs of regression by ProcellaCOR treatments in previous years. See our Annual Monitoring Report on our website for some excellent information showing native and invasive plant density on the Lakes over time. We continue to be diligent in identifying solutions for Swimmers Itch (SI) mitigation as well as exploring grants for various programs to reduce the financial dependency on our Lake District levy. Below find a summary of the key initiatives and are progress on each.

EWM

Overall, we continue to be optimistic about having attained a level of “control” of EWM on the Twins. This past fall we applied for an AIS grant to assist with our management activities planned and recently received notice of that grant being awarded. The primary activities planned for 2023 include;

- We will be treating 2 separate polygons slightly under 10 acres of milfoil early in June with ProcellaCOR. One polygon is located SE of the island on N Twin and the other on the SE shore of S Twin.
- We will again be performing DASH activities totaling 15 days in select small areas of EWM in each lake. Additionally, DASH will be performed on followup of areas recently treated with ProcellaCOR.
- Surveys of the lakes will be conducted prior to the spring herbicide treatments and again this fall to continue to track and monitor EWM as well as native plant trends.

SWIMMERS ITCH

We continued to monitor the incidences and locations where swimmers itch occurred in 2022. The District engaged a company called Swimmers Itch Solutions (SIS) to assist in filing a permit with the WDNR to consider a research project to break the host-to-host dynamic which exists between snails and specifically Mergansers on the Twins. We recently received a response that our permit was again denied. Our SI subcommittee continue to explore ways to appeal the WDNR decision as well as other alternatives to try and identify a solution to this problem! We intend to converse with other lakes to determine how extensive SI is throughout northern WI.

LAKE MANAGEMENT PLAN

We have created a sub committee to update our Lake Management Plan. This will begin in late April and be submitted to the WDNR in late summer. The LMP is a critical document to outline future strategies to effectively manage our lakes. Additionally, it is a required document in order for us to be eligible for future grant funding.

WATER QUALITY MONITORING

The Twins continue to participate in the CLMN monitoring program. This program trends various chemicals such as Phosphorus as well as lake clarity over time. Overall, the Lakes continue to have very good and consistent clarity as well as no negative trends in unwanted chemicals present in the lakes.

FISHEREE

Last fall, a group of lake volunteers worked with the WDNR and stocked our lakes with muskie fingerlings. Fish surveys had identified a decline in the Muskie population and thus a stocking occurred. Future stockings of Muskie fingerlings are very probable. Discussions with the WDNR suggest that the Twins continue to be sufficiently reproducing a sufficient walleye population.

BUOYS

At the annual meeting in 2022, a budget line item approved the replacement of our lakes buoys. We have received all new buoys and anchoring systems for improving the navigational safety on the lake.

Be sure to check the Lake District website - nstlakedistrict.com - for news and information.

Looking forward to a great summer on the Twins!

Commissioners of North South Twin Lakes Rehabilitation and Protection District